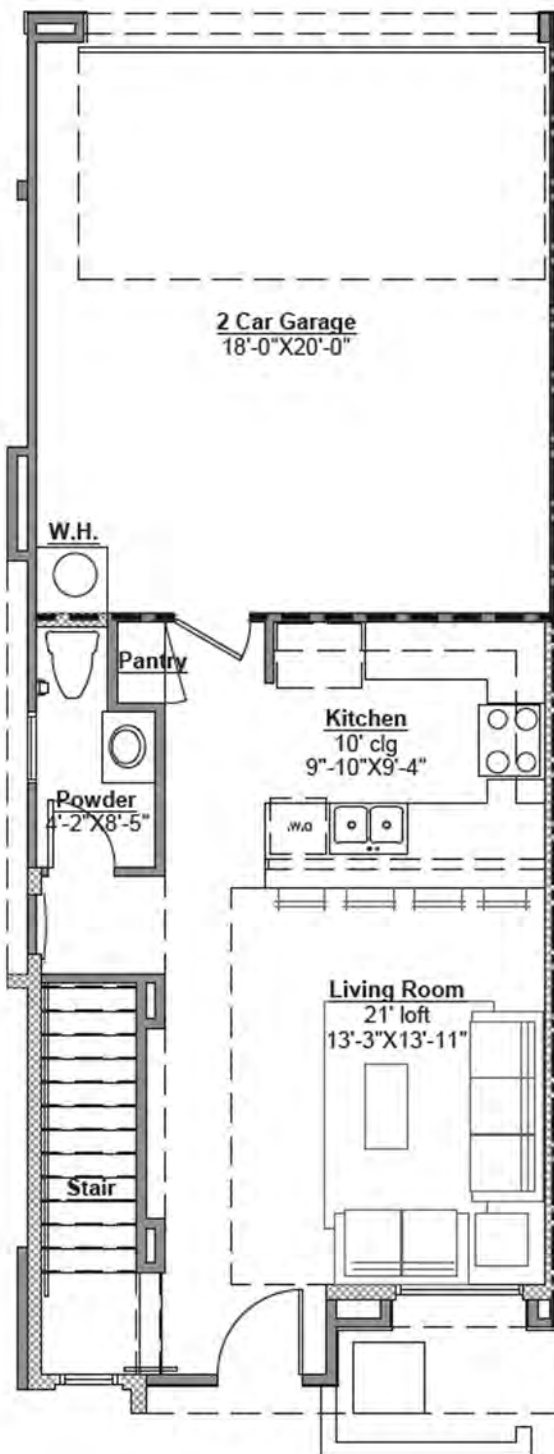


Thrive

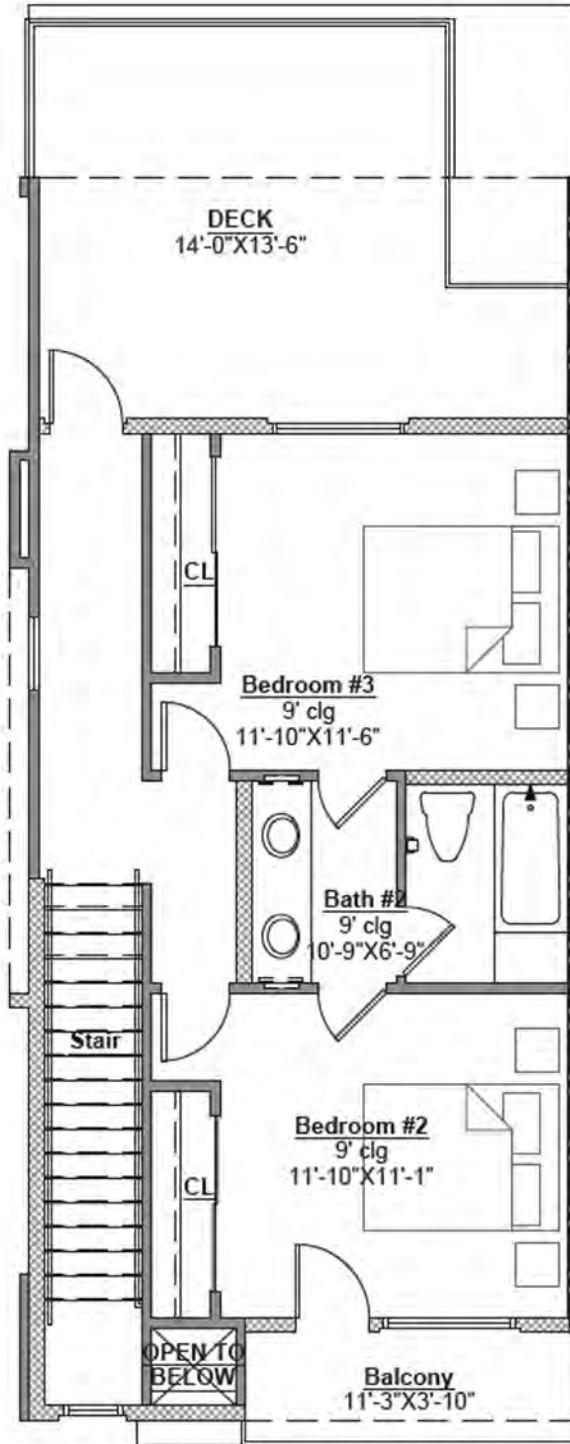
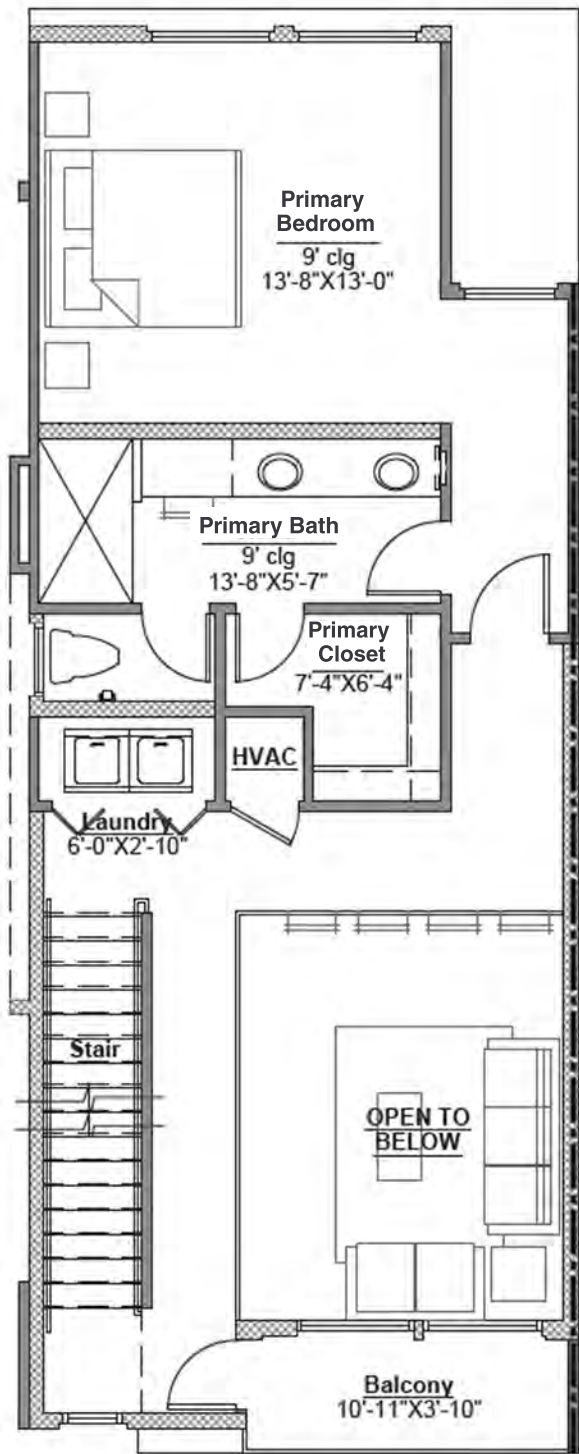
Level One



Thrive

Level Two

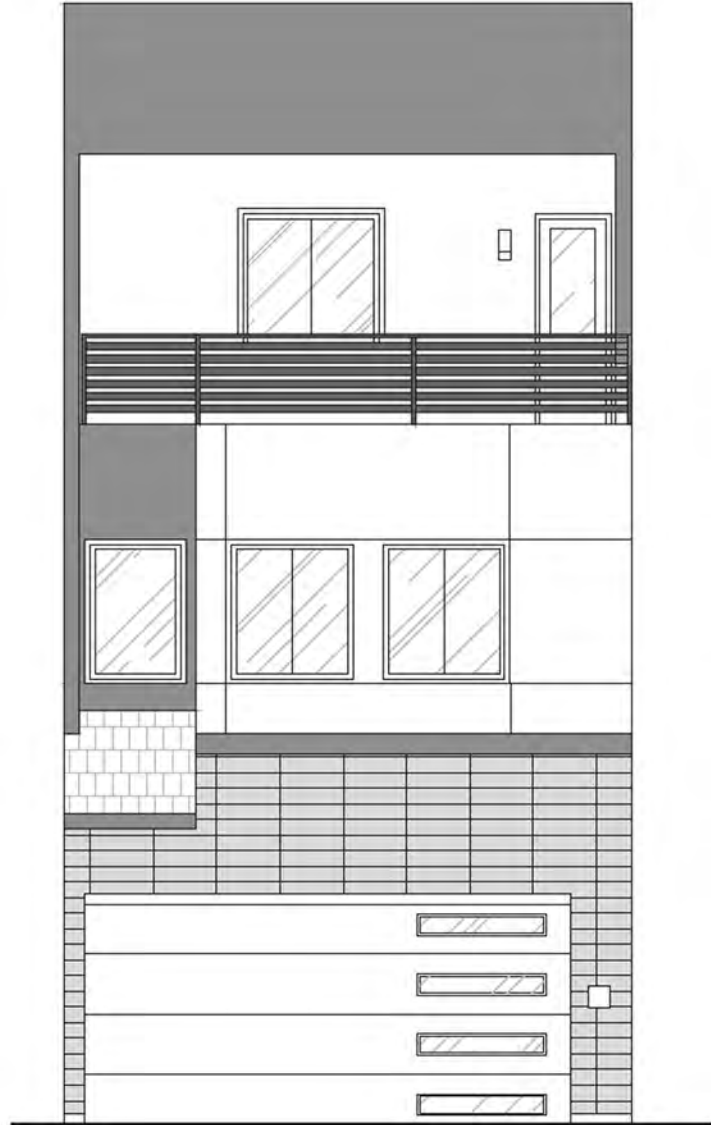
Level Three



Thrive

Plan A and D
3 Bed | 2.5 Bath | 1,668 Sq. Ft.

Elevations Exterior Renderings

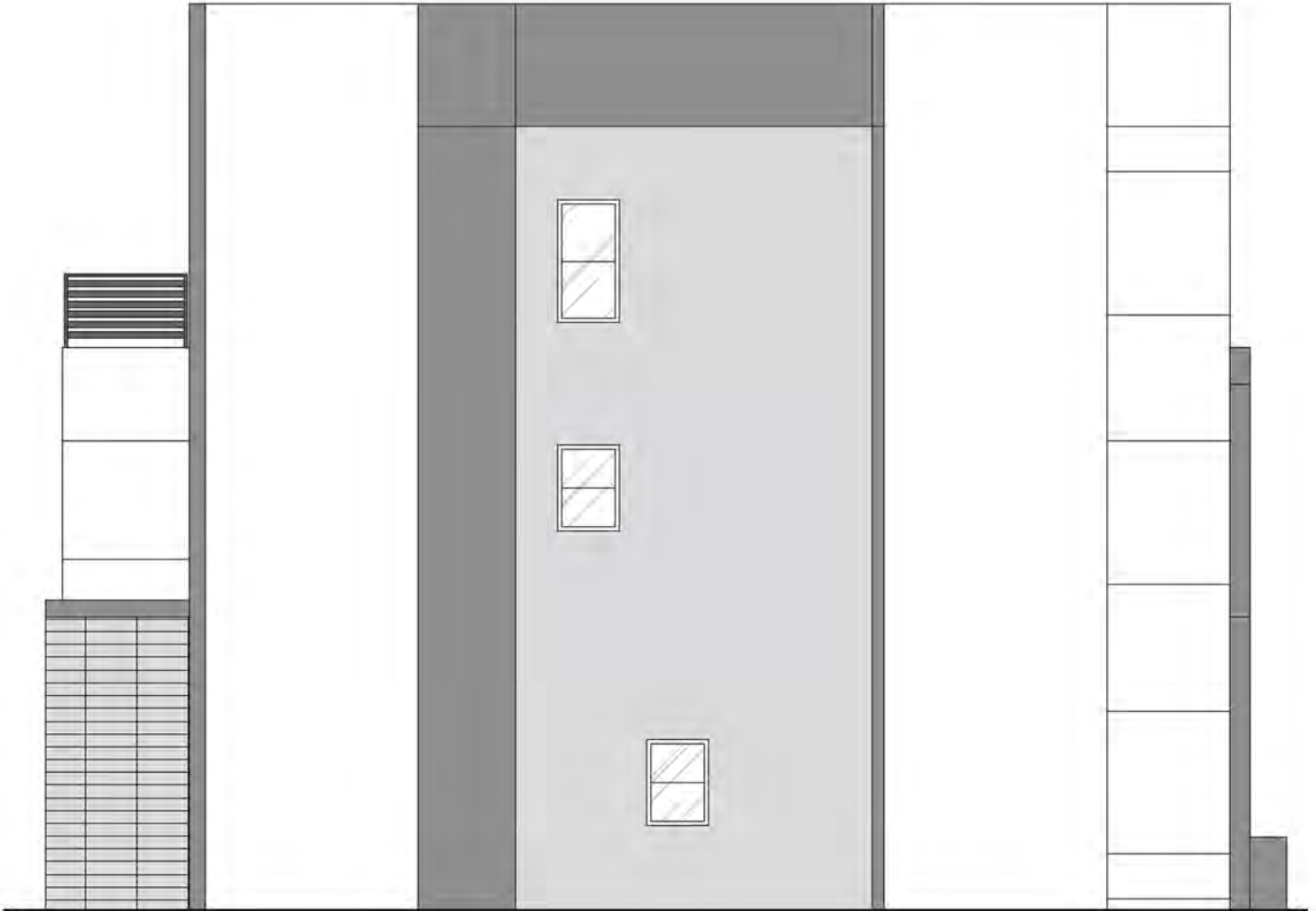


Thrive

Plan D

3 Bed | 2.5 Bath | 1,668 Sq. Ft.

Elevations Exterior Renderings



This is not an offer to sell, but is intended for information only. The developer reserves the right to make modifications in materials, specifications, plans, designs, pricing, scheduling and delivery of the homes without prior notice. All dimensions are approximate and subject to normal construction variances and tolerances. Plans and dimensions may contain minor variations from floor to floor. Dimensions are maximum overall subject cutouts. We reserve the right to make changes in accordance with the applicable offering plan. Exclusively represented by Coldwell Banker Premier Realty.

